

X300 Laser Scanner

3D Laser Scanning
that works, anywhere



X300 *Simple, tough, accurate*

*The right tool for your
daily work*

STONEX X300 is a 3D Scanner designed to deliver effective results every day, on any project.

It's ease of use, reliability, flexibility and reasonable price make it your perfect work companion.



RUGGED DESIGN

The fully sealed case protects your inversion making it possible to get the job done where others fail, regardless of dust, humidity, heat or bumps.



EASE OF USE

Push one button and control X300 with your smartphone or tablet. Laser scanning has never been easier.



RETURN ON INVERSION

X300 balances the performance you really need in a wide range of applications with a reasonable price.



EXPANDABLE

A complete set of accessories provide flexibility in any environment.



MADE IN ITALY

A clean effective design for your daily work.

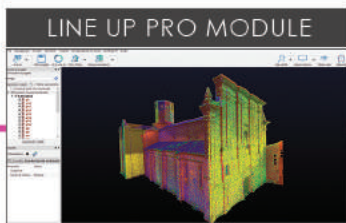




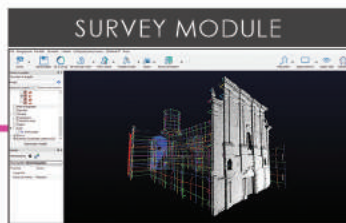
STONEX RECONSTRUCTOR

Powerful and usable 3D Software

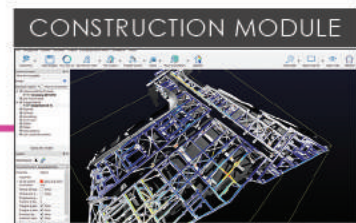
STONEX RECONSTRUCTOR SOFTWARE will guide you through a complete and clear workflow with expandable modules suited to your needs.



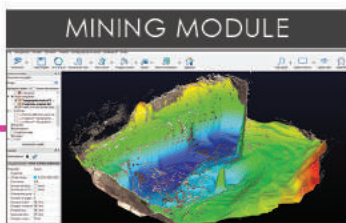
LINE UP PRO MODULE
Powerful Cloud Registration Tool, known for its efficient algorithm that makes alignment easier.



SURVEY MODULE
All the Cloud management tools in one application.



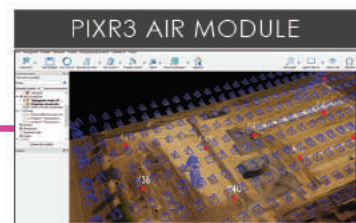
CONSTRUCTION MODULE
Advanced features for BIM, Architecture and Construction.



MINING MODULE
All you need for quarries, cut&fill volumes, excavations, DTM.



COLOR & MAPPING MODULE
Use your own high resolution camera to color the scans.



PIXR3 AIR MODULE
Process data collected with UAV and integrate them with X300

Open File Manager

If you are using CAD, crime scene, car crash analysis or other 3rd party software, you can now load the point cloud data collected with X300 directly into your workflow.

TECHNICAL FEATURES

PERFORMANCE

| | | |
|-----------------------|--|-----------------------|
| Range | 1.6 – 300 m, 100% reflectivity (on white) | |
| Field of view | Horizontal | 360° (full panoramic) |
| | Vertical | 90° (-25° to +65°) |
| Scan rate | Up to 40000 points/sec | |
| Laser Beam Divergence | 0.37 mrad | |
| Grid spacing | 39 mm x 39 mm @ 100 m | |
| Angular resolution | 1.35' (H) x 1.35' (V) (at max resolution) | |
| Range accuracy | < 6 mm @ 50 m - (1 sigma) < 40 mm @ 300 m | |

SYSTEM

| | | |
|-----------------------|---|--|
| Scanning optics | Vertically rotating mirror, horizontally rotating base | |
| Laser Class | Class 1M (IEC 60825-1) | |
| Laser wavelength | 905 nm (invisible) | |
| Dual-axis compensator | Accuracy 0.08°, Range +/- 20° | |
| Integrated cameras | 5 + 5 megapixels | |
| Resolution | 120MB over 360° | |
| Data storage | Integrated 32Gb memory | |
| Data transfer | Wi-Fi, USB device, Ethernet | |
| Scanner control | Dedicated Wi-Fi web interface for smartphone/tablet (Android, iOS and Windows Mobile) | |

| | | |
|-----------------|------------------|-------------------------------------|
| Scanner | Size (D x W x H) | 215 mm x 170 mm x 430 mm |
| | Weight | 6.15 kg/12.35 lbs (without battery) |
| Battery | Size (D x W x H) | 42 mm x 165 mm x 120 mm 0.85 kg / |
| | Weight | 1.76 lbs |
| AC Power Supply | Size (D x W x H) | 147 mm x 63 mm x 38 mm |
| | Weight | 200 g / 0.441 lbs |

ELECTRICAL

| | |
|-------------------|---------------------------------------|
| Power supply | 12 V (battery or external power unit) |
| Power consumption | 40 W (on average) |
| Battery type | Li-ion |
| Operation | > 3 h |

ENVIRONMENTAL

| | |
|------------------|---------------------------------|
| Operating temp. | -10°C to +50°C / 14°F to 122°F |
| Storage temp. | -25°C to +80°C / -13°F to 176°F |
| Humidity | Non-condensing |
| Protection class | IP65 |

Illustrations, descriptions and technical specifications are not binding and may change



ACCESSORIES

MONITORING KIT

External Power Supply with Ethernet cable control to operate remotely the scanner in monitoring projects.



GPS KIT

Kit designed to connect the GNSS receiver to the X300 Laser Scanner. The easiest way to georeference your 3D data.

X300 FRAMEWORK

Expand the field of view and scan ceilings and tunnels.



CAMERA KIT

Install a DSLR camera to apply high resolution images to your scans



STONEX AUTHORIZED DEALER

STONEX®
Part of UniStrong

Via Cimabue 39 - 20851 Lissone (MB) Italy
Phone +39 039 2783008 | Fax +39 039 2789576
www.stonex.it | info@stonexpositioning.com