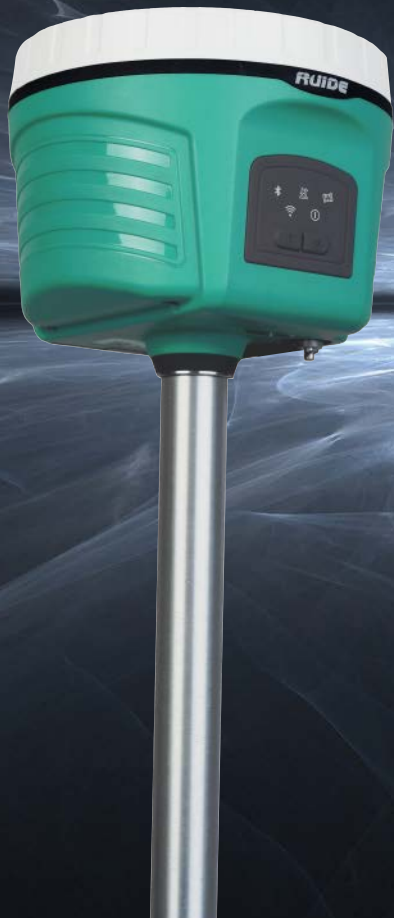




The New PULSAR R6p



Rimu | Dynamic Measure
Technology



The New PULSAR R6p

RECEIVER SPECIFICATION

Mother Board	Pacific Crest BD990
Channels	336
GPS Tracking	L1C/A, L2E, L2C, L5
GLONASS Tracking	L1C/A, L2C/A, L3 CDMA
BeiDou Tracking	B1, B2, B3
Galileo Tracking	E1, E5A, E5B E5AltBOC, E6
SBAS	L1C/A, L5
QZSS	L1 C/A, L1 SAIF, L2C, L5
IRNSS	L5
L-Band	OmniSTAR, Trimble RTX
Positoning Rate	1-50Hz

RECEIVER ACCURACY

Code Differential	Horizontal 0.25m+1ppm (rms) Vertical 0.50m+1ppm (rms)
Static	Horizontal 2.5mm+0.5ppm (rms) Vertical 5mm+0.5ppm (rms)
Real-Time Kinematic	Horizontal 8mm+1ppm (rms) Vertical 15mm+1ppm (rms)
Network RTK	Horizontal 8mm+0.5ppm (rms) Vertical 15mm+0.5ppm (rms)
L-Band	Horizontal 2cm (rms) Vertical 5cm (rms)

INTERFACES

Button	Two
LED Indicator	Bluetooth, Data Link, Satellite, WiFi, Power

COMMUNICATION

I/O	5pin LEMO external power +RS232 7pin LEMO USB (OTG) + Ethernet Radio antenna interface SIM card slot
UHF Radio Module	1/2/3W switchable 410-470MHz
Protocol	TrimTalk 450s, TrimMark3, PCC EOT, SOUTH
GSM/GPRS Module	WCDMA, CDMA2000, TD-LTE, FDD-LTE, GPRS, EDGE
WiFi	802.11b/g Hotspot Data Link
Bluetooth	Bluetooth 2.1 +EDR and 4.0
NFC	<10cm

TILT MEASUREMENT

Method	Rimu (RUIDE Inertial Measurement Unit)
Working Range	60°
Accuracy	<2cm (within 30°) <5cm (within 60°)

DATA STORAGE

Type & Storage	SSD 8GB External USB pen drive
Date Transfer	USB transfer Supports FTP/HTTP download CMR+,
Data Format (Differential)	CRMx, sCMRx, RTCM 2.1, RTCM 2.2, RTCM2.3, RTCM 3.0, RTCM 3.1, RTCM 3.2
GPS Output Format	NMEA 0183 GSV, AVR, RMC,HDT, VGK, VHD, ROT, GSK, GGA, GSA, ZDA, VTG, GST, PJT, PJK, BPQ, GLL, GRS, GBS and binary code: Trimble GSOF, NMEA2000
Network Model	VRS, FKP, MAC NTRIP fully supportable

SENSORS

Tilt	Within 30°
E-bubble	Yes
Thermometer	Yes

POWER SUPPLY

Supply Type	Dual batt., hot-swapping
Voltage	9-25V DC; Overvoltage protection
Battery	Removable Li-on 7.4V, 3400mAh
Operating Time (1 batt.)	Static mode 13h Rover mode 10h
External Power	PowerHub (external power bank) Powerod (smart power pole)

PHYSICAL

Dimension	125mm (H), 135mm (W) 129mm (H), 112mm (W)
Weight with batt.	1390g
Operating Temperature	-45°C to 80°C
Protection Class	IP67
Shock	2m drop on hard surface
Vibration	40G 10ms sawtooth wave



📍 7F, No.39 Sicheng Road, Guangzhou 510663, China
☎ +86-20-23380961
🌐 www.ruide.xyz
✉ support@ruideinstrument.com

RUIDEinstrument

RUIDEPositioning